



Service Bulletin: 3

Revision: 1

Razor International Pty Ltd, Campbellfield VIC
service@razorinternational.com
1300 555 865

Drive Pin and Collar Service

Purpose: To ensure the longevity of the drive connection.

Reference: Drive Pin & Collar on Razor Delta Drive Units

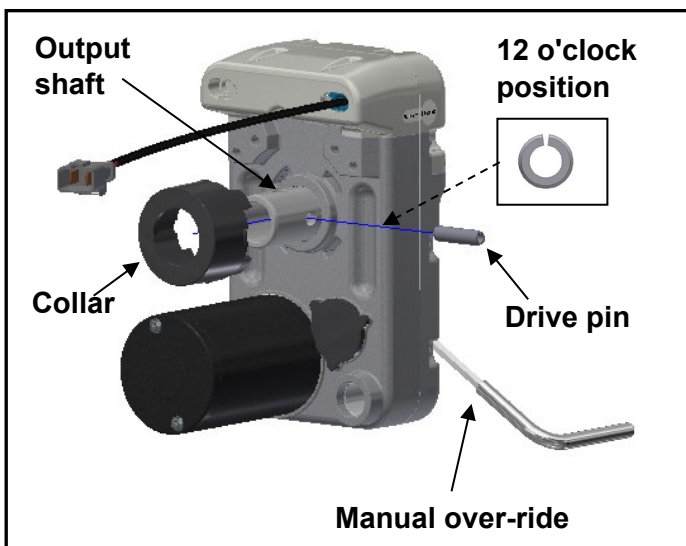
Product affected: Razor Delta Drive Units

Symptom: If the drive pin is not in the correct fitment and then it will need to be repositioned

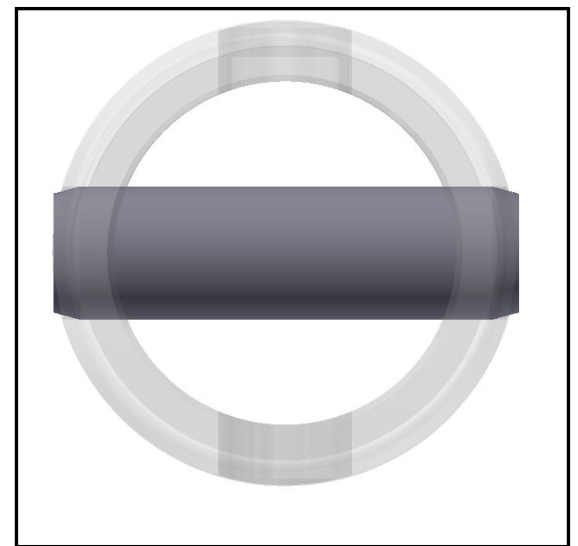
Note: ensure the slot is at 12 o'clock position as per the image below.

Procedure: To reposition the drive pin, slide collar back, align the drive pin into the hole of the output shaft; to reposition the collar, slide the collar over the drive pin and push into the pockets (4 off) in the back of the Delta Drive rear housing as per detail below.

(Use manual over-ride handle for alignment)



After
Fitment



NOTE: DO NOT CRUSH DRIVE PIN BEFORE FITMENT.