



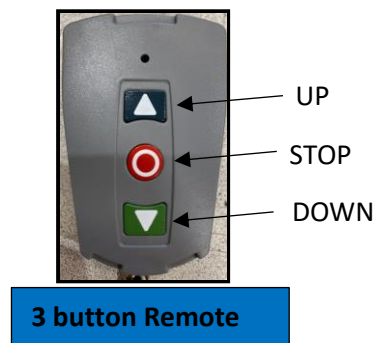
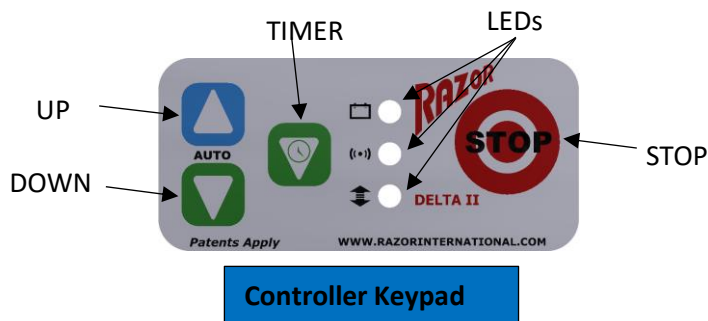
Technical Bulletin: 25

Revision: 2

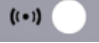
Razor International Pty Ltd, Campbellfield VIC
service@razorinternational.com
1300 555 865

3 Button Remote Pairing & De-Pairing (DELTA II)

Affected Product: D1.5/DII controller and Controller Module(CII)



PAIRING PROCEDURE

CONTROLLER: Press and hold “STOP” button, then press and hold “TIMER” buttons together for 3 seconds until double beep is heard. Green LED (the middle Led ) will flash twice per second.

(Note: Pairing mode on the controller will remain active for 40 seconds or until pairing with remote is made)

REMOTE: Press and hold “STOP” button on the remote, then press and hold “UP” buttons together until a quick triple beep is heard and release the buttons, a further long beep indicates the pairing is complete.

(Note: Pairing mode on the remote will remain active for 8 seconds or until pairing is made with remote)

To change channel: press and hold “STOP” button on the remote for 3 seconds until beep/beeps is heard:

- the LED will indicate in Green with 1 beep when on Channel 1(Default),
- the LED will indicate in Red with 2 beeps when on Channel 2 (Activation required)
 - To activate Channel 2, press and hold “Stop” button, then press and hold “Down” buttons together for 5 seconds until a double beep is heard;
 - To de-activate Channel 2, press and hold “Stop” button, then press and hold “Down” buttons for 8 seconds until a triple beep is heard (3 seconds after a double beep)

To check which channel is selected, a simple press on the “Stop” button, indicating:

- the LED flashes green once with 1 beep when Channel 1(Default) is selected
- the LED flashes red once with 1 beep when on Channel 2 is selected.

Note: any press of “UP”/“STOP”/“DOWN” button will wake a connected controller and indicate which Channel is set

DE-PAIRING PROCEDURE

REMOTE: Press and hold “STOP” button on the remote, then press and hold “UP” buttons together for 8 seconds, initially a quick triple beep is heard and then keep holding until a long triple beep is heard . Now, the remote is de-paired from the controller.

If the above pairing and de-pairing are not successful, repeat the procedures.