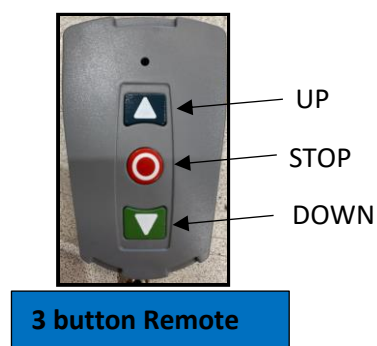
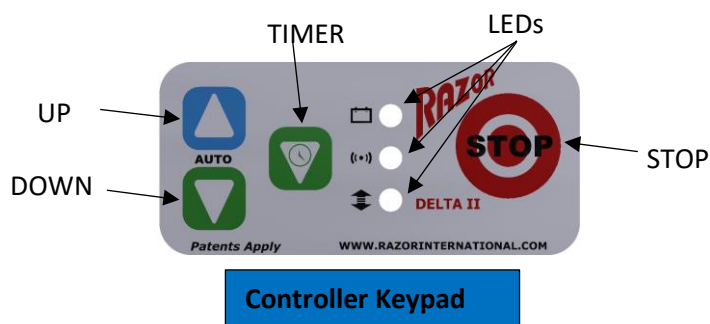


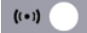


## 3 Button Remote Pairing & De-Pairing (DELTA II)

**Affected Product:** D1.5/DII controller and Controller Module(CII)



### PAIRING PROCEDURE

**CONTROLLER:** Press and hold “STOP” button, then press and hold “TIMER” buttons together for 3 seconds until double beep is heard. Green LED (the middle Led ) will flash twice per second.

(Note: Pairing mode on the controller will remain active for 40 seconds or until pairing with remote is made)

**REMOTE:** Press and hold “STOP” button on the remote, then press and hold “UP” buttons together until a quick triple beep is heard and release the buttons, a further long beep indicates the pairing is complete, please note below:

1. when pairing the led will glow amber, if the process times out it will flash RED rapidly 5 times , if successfully it will flash Green rapidly 5 times.
2. Pairing mode on the remote will remain active for 8 seconds or until pairing is made with remote)

### TO CHANGE CHANNEL

**Procedure:** Press and hold “STOP” button on the remote for 3 seconds until beep/beeps is heard:

- the LED will indicate in Green with 1 beep when on Channel 1(Default),
- the LED will indicate in Red with 2 beeps when on Channel 2 (Activation required)
  - To activate Channel 2, press and hold “Stop” button, then press and hold “Down” buttons together for 5 seconds until a double beep is heard;
  - To de-activate Channel 2, press and hold “Stop” button, then press and hold “Down” buttons for 8 seconds until a triple beep is heard (3 seconds after a double beep)

**Channel indicator:** A simple press on the “Stop” button, indicating:

- the LED flashes **green** once with 1 beep when Channel 1(Default) is selected
- the LED flashes **red** once with 1 beep when on Channel 2 is selected.

Note: any press of “UP”/“STOP”/“DOWN” button will wake a connected controller and indicate which Channel is set

## DE-PAIRING PROCEDURE

**REMOTE:** Press and hold “STOP” button on the remote, then press and hold “UP” buttons together for 8 seconds, initially a quick triple beep is heard and then keep holding until a long triple beep is heard . Now, the remote is de-paired from the controller.

**If the above pairing and de-pairing are not successful, repeat the procedures.**